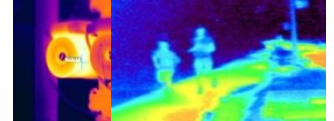




Dynacom WQT450PT Thermal IP Camera

- Uncooled IRFPA Microbolometer, Temperature detection
- Effective resolution 396x264
- Sensitivity 50mK
- 8mm to 50mm lens optional
- Infrared detection wavelength 8-14um
- Support 8 area temperature Detection
- Support 17 Polarity Control
- Support DVE image Enhance



CAMERA	
Detector Type	Long-Life,Uncooled IRFPA Microbolometer
Effective Resolution	396x264
Pixel Pitch	20μm
Sensitivity	50mK
Spectral Range	8 to 14μm
Temperature Response	30ms
Thermal Lens	8mm,15mm,25mm,35mm,50mm, optional, motorized 75mm
Focus	Manual
FOV(Fixed Lens)	43.6°×36.4°/24°×18°/14.6°×11°/10.5°×7.8°/7.3°×5.5°
Fixed Lens Recognition Distance (Body)	70/130/220/300/450M
Fixed Lens Recognition Distance(Vehicle)	130/250/400/600/800M
IMAGE	
Video Compression	H.264 High/Main/Baseline Profile, MJPEG
Bit Rate (CBR/VBR)	100kb-6000kb
Audio Compression	G.711 ,RAW_PCM,NONE
Thermal Resolution	D1/30fps
Stream	D1 to QCIF
Image Color Mode	Black-Heat /White-Heat/Rainbow/Iron-Red up to 17 modes
DVE Image Enhance	Yes
3D Noise Reduce	Yes
Image Correction	Auto/Manual/External
Image Overturn	Horizontal /Vertical /Horizontal+Vertical
NETWORK	
Network Protocols:	IPv4/v6,RTSP/RTP/RTCP,TCP/UDP,HTTP,DHCP,DNS,FTP,DDNS,PPPOE,SMTP,SIP
Alarm Trigger	Temperature Alarm,MotionDetection,Networkdisconnect,Diskalarm,I/O alarm
RTSP Video	Standard RFC2326, Support QuickTime / VLC Player.
Security	User security authentication, Reset, Hardware WatchDog
Web Language	English, Chines
System Compatibility	Onvif
INTERFACE	
Ethernet	1 Ethernet (10/100 Base-T) RJ-45 Connector
Audio I/O	Optional
Alarm I/O	Optional
RS485	Yes
BNC Output	Yes
Reset Button	Yes(built in)
Edge Storage	Micro SD/SDHC slot, Max 32GB
GENERAL	
Power Supply	AC24V±10%
Power Consumption	30W
Operating Temperature / Humidity	-25°C~ +55°C
Ingress Protection	IP66
Approvals	CE / FCC
Product Dimensions	345x202x445mm
Product Weight	10kg

Accessories

