

Dynacom WQT4240PT Thermal Middle IP PTZ



- Uncooled IRFPA Microbolometer
- Temperature detection
- Effective resolution 396x264
- Sensitivity 50mK
- 100mm Motorized lens
- Vision Optical Zoom 40X
- Infrared detection wavelength 8-14um
- Support 8 area temperature Detection
- Support 17 Polarity Control
- Support DVE image Enhance

CAMERA

Detector Type	Long-Life,Uncooled IRFPA Microbolometer
Effective Resolution	396x264
Pixel Pitch	20μm
Sensitivity	50mK
Spectral Range	8 to 14μm
Temperature Detection	Yes
Vision Lens	40X Optical Zoom, 7.75mm(F1.6)~310mm(F5.6)
Thermal Lens	Motorized 100mm
Focus	Motorized
FOV	4.8°×3.6°/3.6°×2.7°
Temperature Detect Distance(Fire)	2600m (Lens:100mm)
Motorized Lens Recognition Distance (Body)	800m/1000m
Motorized Lens Recognition Distance (Vehicle)	1500m/2000m

IMAGE

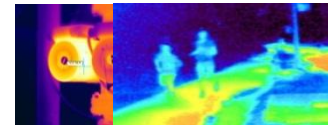
Video Compression	H.264 High/Main/Baseline Profile, MJPEG
Bit Rate (CBR/VBR)	500kb~10Mb
Audio Compression	G.711 ,RAW_PCM
Thermal Resolution	D1/30fps
Vision Resolution	1080P/30fps
Stream	D1 ,CIF
Image Color Mode	Black-Heat /White-Heat/Rainbow/Iron-Red up to 17 modes
DVE Image Enhance	Yes
3D Noise Reduce	Yes
Image Correction	Auto/Manual/External
Image Overturn	Horizontal /Vertical /Horizontal+Vertical

NETWORK

Network Protocols	IPv4/v6,RTSP/RTP/RTCP,TCP/UDP,HTTP,DHCP,DNS,FTP,DDNS,PPPOE,SMTP,SIP
Alarm Trigger	Temperature Alarm,Motion Detection,Network disconnect,Disk alarm,I/O alarm
RTSP Video	Standard RFC2326, Support QuickTime / VLC Player.
Security	User security authentication, Reset, Hardware WatchDog
Web Language	English, Chinese
System Compatibility	Onvif

INTERFACE

Ethernet	1 Ethernet (10/100 Base-T) RJ-45 Connector
Audio I/O	Optional
Alarm I/O	Optional
RS485	Yes
BNC Output	Yes



Reset Button	Yes(built-in)
Edge Storage	Micro SD/SDHC slot ,Max 32GB
GENERAL	
Power Supply	AC24V \pm 10%
Power Consumption	40W(MAX)
OperatingTemperature	-25 °C ~ 55 °C (-13 °F ~ 131 °F)
Ingress Protection	IP66
Approvals	CE / FCC
Product Dimensions	463x310x303.6mm
Product Weight	22kg

