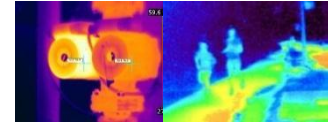




Dynacom WQT430PT Thermal IP Camera

- Uncooled IRFPA Microbolometer, Temperature detection
- Resolution 420x315, Sensitivity 50mK
- Thermal lens 50 mm, Vision Optical Zoom 30X

| CAMERA | |
|--------------------------------------|--|
| Detector Type | Long-Life,Uncooled IRFPA Microbolometer |
| Array Format | 420x315 |
| Pixel Pitch | 25 μm |
| Sensitivity | 50mK |
| Spectral Range | 8 to 14μm |
| Temperature Detection | Yes |
| Vision Lens | 30X Optical Zoom |
| Thermal Lens | 50mm |
| Focus | Manually |
| FOV | 11.9o×9o |
| Detect Distance(Vehicle) | 2000 m |
| Detect Distance(Human 1.8m) | 1100 m |
| Recognize Distance(Vehicle) | 1200 m |
| Recognize Distance(Human 1.8m) | 650 m |
| Temperature Detect Distance(Vehicle) | 650 m |
| Temperature Detect Distance(Human) | 320 m |
| IMAGE | |
| Video Compression | H.264 High/Main/Baseline Profile, MJPEG |
| Bit Rate (CBR/VBR) | 50kb-4000kb ,500kb-12Mb |
| Audio Compression | G.711 ,RAW_PCM |
| Thermal Resolution | D1/30fps |
| Vision Resolution | 1080P/30fps |
| Stream | D1 ,CIF ;1080P |
| Image Color Mode | Black-Heat /White-Heat/Rainbow/Iron-Red |
| DVE Image Enhance | Yes ,Level 0 -6 |
| 3D Noise Reduce | Yes |
| Image Correction | Auto/Manual/External |
| Image Overturn | Horizontal /Vertical /Horizontal+Vertical/ |
| NETWORK | |
| Network Protocols: | IPv4/v6,RTSP/RTP/RTCP,TCP/UDP,HTTP,DHCP,DNS,FTP,DDNS,PPPOE,SMTP,SIP |
| Alarm Trigger | Temperature Alarm,Motion Detection,Network disconnect,Disk alarm,I/O alarm |
| RTSP Video | Standard RFC2326, Support QuickTime / VLC Player. |
| Security | User security authentication, Reset, Hardware WatchDog |
| Web Language | English, Chines |
| System Compatibility | Onvif |
| INTERFACE | |
| Ethernet | 1 Ethernet (10/100 Base-T) RJ-45 Connector |
| Audio I/O | 1ch Audio In,1ch Audio Out |
| Alarm I/O | 1ch Alarm In,1ch Alarm Out |
| RS485 | Yes |
| BNC Output | Yes |
| Reset Button | Yes |
| Edge Storage | Micro SD/SDHC slot ,Max 32GB |
| GENERAL | |
| Power Supply | DC9-DC36V ,AC24V optional |
| Power Consumption | 50W(MAX) |
| Operating Temperature / Humidity | -20°C~ +55°C / 0% - 90% RH |
| Ingress Protection | IP66 |
| Approvals | CE / FCC |
| Product Dimensions | 210x246x375mm |
| Product Weight | 10kg |



Accessories



Vehicle Bracket



Wall Mounting Bracket