

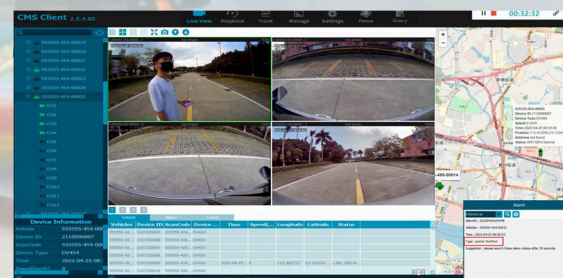
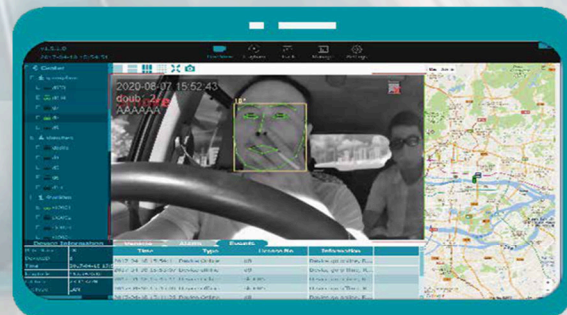
## Dynacom AI Mobile Video Solutions

### AI Based Mobile Video Surveillance and Fleet Management



The ADAS system will send alarms 2 seconds in advance when a vehicle is likely to collide with the front. If the approaching danger distance is less than 0.8 seconds, it will give sharp alarms and pop up message windows on the displayer for warning. When a vehicle deviates from its route, it will also send alerts and display the lane lines in the corresponding direction.

When drivers have any abnormal driving behaviors (fatigue, distraction, smoking, talking on the phone, yawning, no driver and no mask), it will send out audible and visual alerts. Dynacom AI dashcam with audio and visual warnings can increase driver's alertness, and avoid car accidents effectively.



<b>Model</b>	<b>Dynacom AI Dashcam DCC44</b>	
<b>System</b>	Operating system	Linux
	Operating interface	Mobile APP/WebUI
	Video permission	Administrator & user setting
<b>Video</b>	Video input	Built-in 2K+Built-in 1080P+Ext 2*1080P
	Video output	PAL: 25 fps, NTSC: 30 fps
	Compression	H.264/H.265
<b>Audio</b>	Audio input	Built-in mic
	Audio output	Built-in speaker
	Record format	Synchronized video & audio recording
	Audio compression	ADPCM
<b>Digital processing</b>	Video resolution	2K/1080P/720P/D1
<b>Storage</b>	Video bit rate	64kbps~10Mbps/channel
	Audio bit rate	32kbps
	Storage consumption	56~2700MB/ (channel*hour)
	Disk Media	Micro SD card x 2, max 512GB*2
<b>Alarm</b>	Alarm input	6 CH
	Alarm output	2 CH
<b>Interface for communication</b>	RS232	1 CH
	RS485	1 CH
	CAN	2 CH
	RJ45	1 CH
	USB	1 CH
<b>Wireless</b>	2G/3G/4G	Optional
	WIFI	2.4g
	WIFI hotspot	Optional
<b>GPS</b>	Optional	
<b>G-Force</b>	Six-axis sensors	Optional
	Windows client	Optional
<b>Software</b>	iOS client	Optional
	WebClient	Optional
	Input	10~32V
<b>Power</b>	Output	12V@4A
	Power Supply	less than 8W
	Standby Power	Not Optional
	Operating temp. & humidity	-20~60 ℃, RH 80%MAX
<b>Electrical specifications</b>	Super Capacitor	Optional

