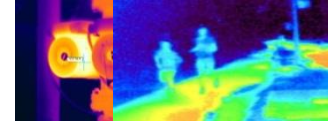




Dynacom WQT4525PT Thermal IP Camera

- Uncooled IRFPA Microbolometer
- Temperature detection
- Effective resolution 396x264
- Sensitivity 50mK
- 50mm + 25mm dual lens
- Infrared detection wavelength 8-14um
- Support 8 area temperature Detection
- Support 17 Polarity Control



CAMERA	
Detector Type	Long-Life,Uncooled IRFPA Microbolometer
Effective Resolution	396x264
Pixel Pitch	20μm
Sensitivity	50mK
Spectral Range	8 to 14μm
Temperature Detection	Yes
Thermal Lens	50mm + 25mm
Focus	Manual
Motorized Lens Recognition Distance (Body)	650M / 300M
Motorized Lens Recognition Distance (Vehicle)	1200M / 600M
IMAGE	
Video Compression	H.264 High/Main/Baseline Profile, MJPEG
Bit Rate (CBR/VBR)	100kb-6000kb,500kb-12Mb
Audio Compression	G.711 ,RAW_PCM
Thermal Resolution	D1/30fps
Stream	D1, CIF;
Image Color Mode	Black-Heat /White-Heat/Rainbow/Iron-Red up to 17 modes
DVE Image Enhance	Yes ,Level 0 -6
3D Noise Reduce	Yes
Image Correction	Auto/Manual/External
Image Overturn	Horizontal /Vertical /Horizontal+Vertical
NETWORK	
Network Protocols:	IPv4/v6,RTSP/RTP/RTCP,TCP/UDP,HTTP,DHCP,DNS,FTP,DDNS,PPPOE,SMTP,SIP
Alarm Trigger	Temperature Alarm, Motion Detection, Network disconnect, Disk alarm,I/O alarm
RTSP Video	Standard RFC2326, Support QuickTime / VLC Player.
Security	User security authentication, Reset, Hardware WatchDog
Web Language	English, Chines
System Compatibility	Onvif
INTERFACE	
Ethernet	1 Ethernet (10/100 Base-T) RJ-45 Connector
Audio I/O	Optional
Alarm I/O	Optional
RS485	Yes
BNC Output	N/A
Reset Button	Yes(built in)
Edge Storage	Micro SD/SDHC slot, Max 32GB
GENERAL	
Power Supply	DC18-DC36V ,AC24V optional
Power Consumption	100W(MAX)
Operating Temperature / Humidity	-25°C ~ +55°C
Ingress Protection	IP66
Approvals	CE / FCC
Product Dimensions	492x260x477mm
Product Weight	12kg

Accessories

